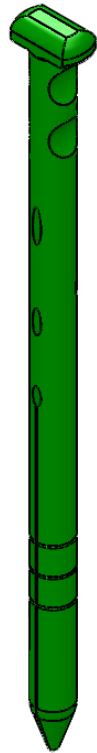
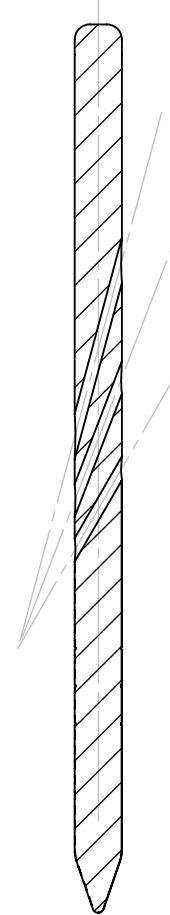
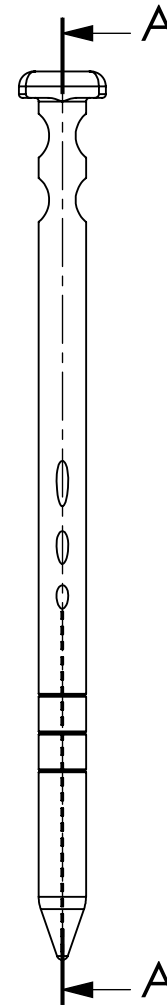
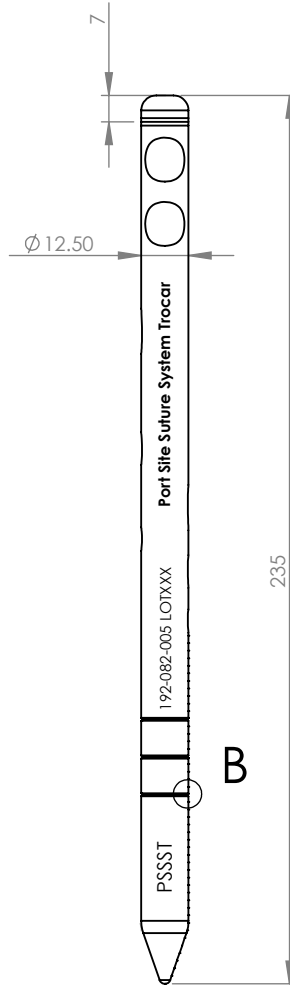
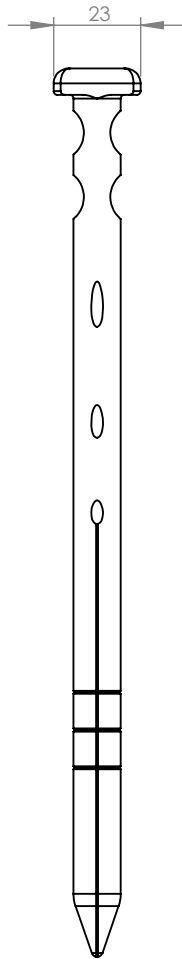
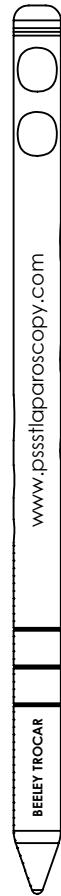


**BASIC**



DETAIL B  
SCALE 1 : 1



SECTION A-A

- NOTES:
- PART TO BE FREE OF SHARP EDGES AND BURRS
  - BREAK ALL CORNERS 0.2MM
  - POLISH OUT MACHINING MARKS
  - WET BLAST TO PS0024
  - ANODIZE TO HMNA.01 CLEAR
  - LASER MARK TO PS0003

DATE	ISSUE	CHANGE NO.	DRAWN	DESCRIPTION
24/7/12	D	1	CB	LASER MARKING
4/6/12	C	1	CB	MATERIAL CHANGE TO ALUMINIUM
2/3/12	B	1	CB	LASER MARKING AND MATERIAL CHANGE
5/12/11	A	0	LJB	ORIGINAL ISSUE

general notes unless noted otherwise  
DO NOT SCALE  
DIMENSIONS IN MILLIMETERS  
LINEAR TOLERANCE IS  $\pm 0.2$   
ANG. TOLERANCE IS  $\pm 1.0^\circ$   
ALL SURFACES Ra0.4

material  
ALUMINIUM TO MS0031

finish  
**REFER NOTES**

drawn checked  
**LJB D BRAZIL**

description  
**REUSABLE PORT SUTURING TROCAR**

drawing number  
**192-082-005**

design number  
**192-08**

date  
**5.12.11**

issue scale  
**D 1:2**  
sheet  
**1/1 A4**

This drawing and/or specification contains information confidential and proprietary to Signature Orthopaedics Pty. Ltd. and is conditionally licensed only. By retention, the recipient agrees not to reproduce or copy it in whole or in part, disclose any or all of its contents without prior written permission, or to make any use of it contrary to Signature Orthopaedics' interest. Recipient further agrees to return it immediately upon request.

