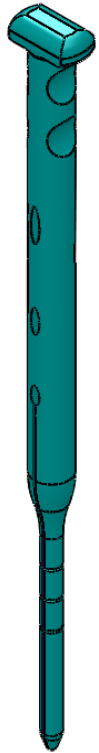
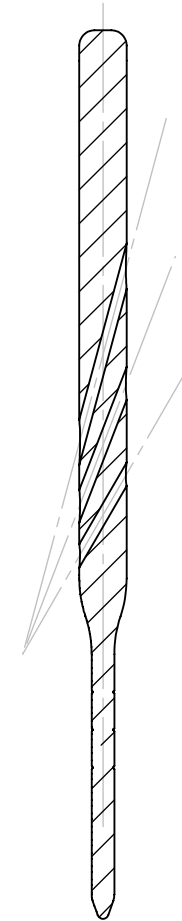
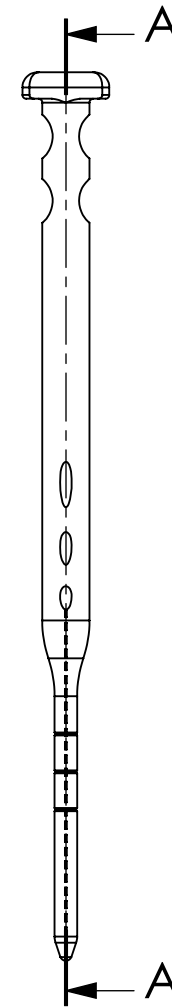
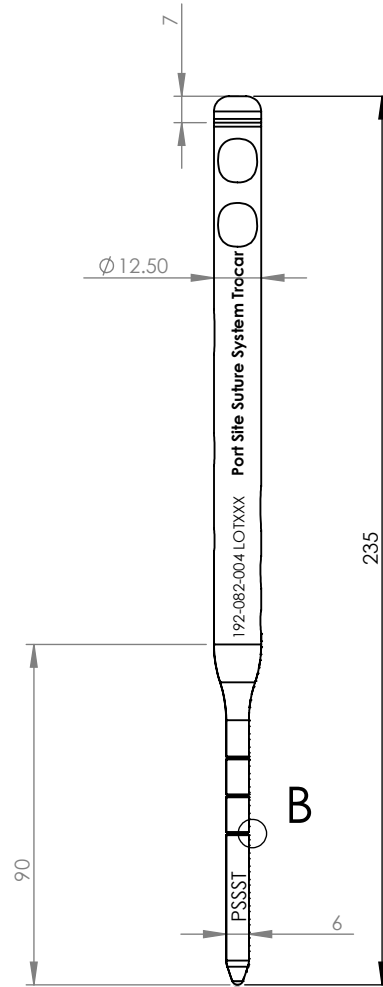
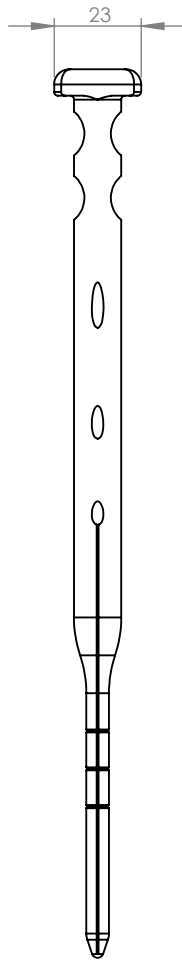


BASIC



DETAIL B
SCALE 1 : 1



SECTION A-A

NOTES:

1. PART TO BE FREE OF SHARP EDGES AND BURRS
2. BREAK ALL CORNERS 0.2MM
3. POLISH OUT MACHINING MARKS
4. WET BLAST TO PS0024
5. ANODISE TO HMNA.01 CLEAR
6. LASER MARK TO PS0003

24/7/12	E	1	CB	LASER MARKING, FINISH
4/6/12	D	1	CB	MATERIAL CHANGE TO ALUMINIUM
2/3/12	C	1	CB	MATERIAL CHANGE TO SS
7/12/11	B	1	CB	LASER MARKING UPDATES, INCREASE SMALLER DIAMETER, BROUGHT 3 LINES DOWN 10MM
5/12/11	A	0	LJB	ORIGINAL ISSUE
DATE	ISSUE	CHANGE NO.	DRAWN	DESCRIPTION

general notes unless noted otherwise
DO NOT SCALE
DIMENSIONS IN MILLIMETERS
LINEAR TOLERANCE IS ± 0.2
ANG. TOLERANCE IS $\pm 1.0^\circ$
ALL SURFACES Ra0.4

material
ALUMINIUM TO MS0031

finish
REFER NOTES

drawn checked
LJB D BRAZIL

description
REUSABLE PORT SUTURING TROCAR

drawing number
192-082-004

design number
192-08

date
5.12.11

issue scale
E 1:2
sheet
1/1 A4

This drawing and/or specification contains information confidential and proprietary to Signature Orthopaedics Pty. Ltd. and is conditionally licensed only. By retention, the recipient agrees not to reproduce or copy it in whole or in part, disclose any or all of its contents without prior written permission, or to make any use of it contrary to Signature Orthopaedics' interest. Recipient further agrees to return it immediately upon request.

